

KEY FEATURES:

- ◆ Real-time project information & management reports
- ◆ Cash forecasting
- ◆ Content driven, robust project workflows
- ◆ Work orders
- ◆ Job costing reports
- ◆ Management of project payment process
- ◆ Project Close-out & component reporting
- ◆ Time capture and billing
- ◆ Vendor and budget management
- ◆ Integration with key business systems
- ◆ Access from anywhere
- ◆ Map reports

BENIFITS

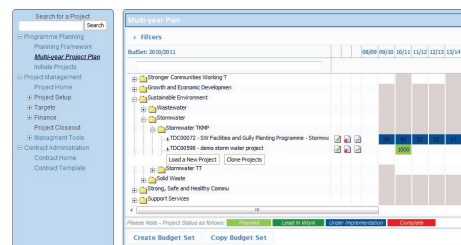
- ◆ Empowers Project Managers to Manage Projects
- ◆ Immediate return for business managers by enabling access to information
- ◆ Accurate cash forecasting means accurate lending
- ◆ Improved asset management
- ◆ Reduced Admin time maximizes ROI

...need to manage your Project Information and Reporting...

TRACK24 OVERVIEW

Track24...

Track24 is a project information management and reporting tool built on a workflow engine. This means that not only do you have access to accurate management and reporting information, but the system guides users through a best practice project management workflow from project conception to completion.



Project Planning

Track24 manages your project payment process and is integrated with your existing Finance system. This means that you can get a view of your project commitments, expenditure and budgets real time. Finance reports include; Project Transaction reports, Cash forecasting, Job Costing, Capex Reports, Vendor Expenditure & Exception reports.

Track24 provides a wealth of management reports, which means managers are able to provide accurate project information to your business as well as identify any issues early on. This minimizes project risks and better manages constraints.

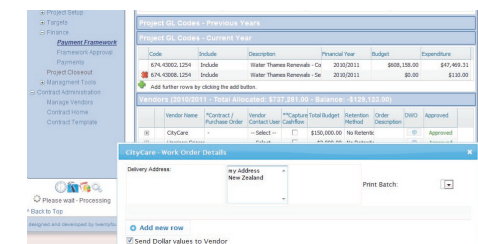
Advantages of Track24...

Track24 is web based which means that you can access it from anywhere at anytime. The role-based security within the system ensures Project Managers see only their projects. Consultants have restricted access to relevant project information for their contracts.

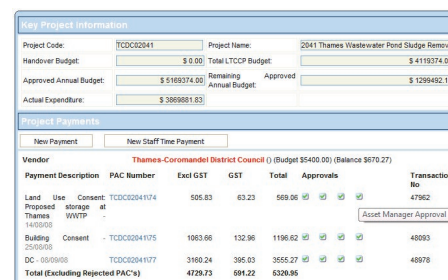


NOVEMBER 2010

for financial & infrastructure asset management systems.

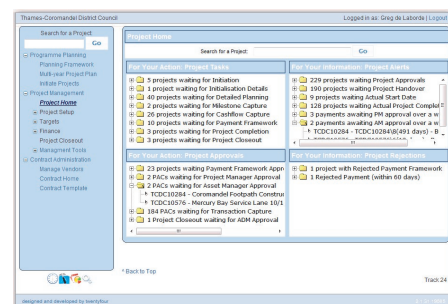


Vendor Allocation

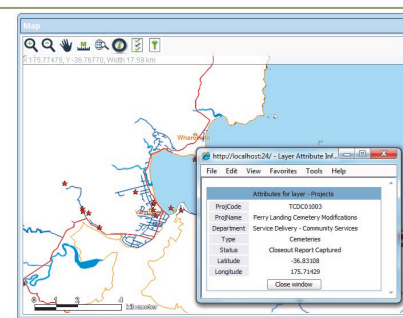


Project Payments

Track24 registers projects against your strategic plan and allows for multi-year project planning. This means that unlike annual based finance systems the project is managed for its entire life against the strategic plan. This allows for performance measurement of the business strategy. Track24's project closeout processes ensure component reports are captured at project completion. This means the information is immediately available



Project Start Page



Map showing Project details

Track24 is integrated with your existing Financial Management System, Electronic Document Management System, Asset Management system and GIS. This means information is captured once & shared by all.

Track24 saves you time, money, is easy to use & has proven success.

Contact us for your live demo now...

Track24 technical information

Acquisition Options

Option 1: License fee, annual maintenance plus services. Software installed onsite and integration with other systems at various levels can be selected.

Option2: Monthly/Annual Usage fee.

There is no upfront software license fee; instead our customers pay an annual usage fee ensuring that modules can be implemented without the need for capital expenditure. Software installed onsite and integration with other systems at various levels can be selected.

Option3: SaaS (Software as a Service). This is another form of rental option where the software resides on our web servers. This impacts integration and can use XML webserices or automated xls uploads for integration.

System Requirements

Track24 is web based and uses the following application architecture;

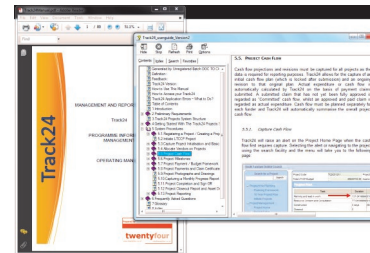
- Internet Information Services
- Microsoft .Net (4)
- SQL database
- Includes web maps

Application and database server specifications vary depending on expected system usage.

Integration with other business systems favors in-house application hosting. External access to the system is via standard web methods. Firewall and security remain the responsibility of the site.

Track24 manuals

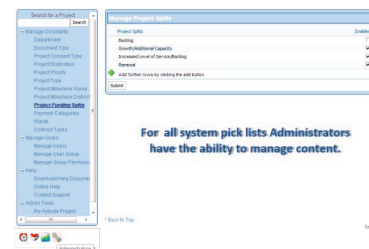
Track24 includes a detailed user manual in addition to a “Step by step” user guide with easy to follow instructions.



These are available within the system and are used during user training.

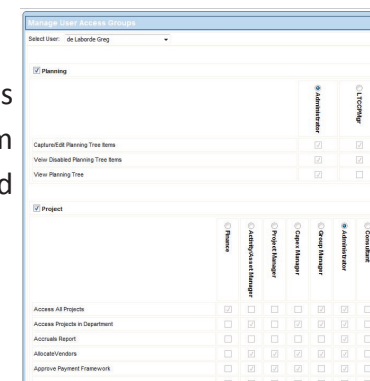
System Administration

Track24 provides easy to use administration tools to manage users, permissions and roles. This means that new roles & associated access permissions are easily created and maintained. Additional tools are provided to manage system constants.



Track24 User/Role

Administration training is provided to both system administrators and to backend administrators.



Other twentyfour services

Twentyfour Group Limited can provide your business with the following products and services;

- ♦ **Management Consulting**
- ♦ **Project support to your project team**
- ♦ **GIS consulting, Integration and solutions**
- ♦ **Custom application development**
- ♦ **Integration of existing business systems (e.g. Property, EDMS, FMS, Asset Management)**
- ♦ **Web development**
- ♦ **IT Project and Change Management consulting**
- ♦ **CRM/Operations solutions**
- ♦ **GIS data capture**
- ♦ **As-Built to Asset integration**
- ♦ **Strategic and Asset management planning services**

Via our partners we provide other great products and services. Check out our website for more details.



Twentyfour Group Ltd
<http://www.twentyfour.co.nz>
Phone: +64 7 868 5647
E-mail: info@twentyfour.co.nz